

The future impact of climate and land-use changes on Anatolian ground squirrels under different scenarios

Hakan Gür

Anatolian Biogeography Research Laboratory, Kırşehir Ahi Evran University, Kırşehir, Turkey

ARTICLE INFO

Keywords:

Anatolia
Biodiversity hotspots
Biodiversity loss
Climate change refugia
Ecological niche modelling

ABSTRACT

Climate and land-use changes are among the most important drivers of biodiversity loss and, moreover, their impacts on biodiversity are expected to increase further in the 21st century. In this study, the future impact of climate and land-use changes on Anatolian ground squirrels (*Spermophilus xanthoprymnus*) was assessed. Accordingly, a hierarchical approach with two steps was used. First, ecological niche modelling was used to assess the impact of climate change in areas accessible to Anatolian ground squirrels through dispersal (i.e. the impact of climate change). Second, based on the habitat preferences of ground squirrels, land-use data were used to assess the impact of land-use change in suitable bioclimatic areas for Anatolian ground squirrels under present and future conditions (i.e. the combined impact of both changes). Also, priority areas for the conservation of Anatolian ground squirrels were identified based on in-situ climate change refugia. This study represents a first attempt to combine niche modelling and land-use data for a species in Anatolia, one of the most vulnerable regions to the drivers of biodiversity loss, because it is the region where three of biodiversity hotspots meet, and interact. Habitat suitability (i.e. suitable habitats across suitable bioclimatic areas) was projected to decline by 19–69% in the future (depending on the scenario), mainly due to the loss of suitable bioclimatic areas (47–77%, depending on the scenario) at lower elevations and in the western part of the central Anatolia and in the eastern Anatolia, suggesting that Anatolian ground squirrels will contract their range in the future, mainly due to climate change. Thus, in-situ climate change refugia were projected mainly in the eastern and southeastern parts of the central Anatolia, suggesting these regions as priority areas for the conservation of Anatolian ground squirrels.

1. Introduction

The rate of global change in nature during the past 50 years is unprecedented in the history of human life. The five greatest drivers of global change in nature and therefore ongoing biodiversity loss (e.g. around one million species already face the risk of extinction) are: changes in land and sea use, direct exploitation of organisms, climate change, pollution, and invasion of alien species (IPBES, 2019). That is, climate and land-use changes are among the most important drivers of biodiversity loss and, moreover, their impacts on biodiversity are expected to increase further in the 21st century. For example, by the year 2100, at 1.5 °C of global warming (above pre-industrial levels), 4% (2–9%) of 12,640 species of amphibians, reptiles, birds, and mammals are projected to lose over half of their climatically determined ranges, and at 4.5 °C, this increases to 44% (31–59%) (Hoegh-Guldberg et al., 2018; Warren et al., 2018). Moreover, by the year 2070, substantial declines in suitable habitats are identified for approximately 19,400 species of amphibians, birds, and mammals, with approximately 1700

species expected to become imperiled due to increased human land-use (Powers and Jetz, 2019).

A region should meet two main criteria to be identified as a biodiversity hotspot. A biodiversity hotspot should have (1) ≥ 1500 endemic vascular plant species and (2) $\leq 30\%$ of its original natural vegetation. In other words, it should be irreplaceable and threatened. According to these criteria, 36 biodiversity hotspots (i.e. regions “where exceptional concentrations of endemic species are undergoing exceptional loss of habitat”; Myers et al., 2000) were identified around the world. The forests and other remnant habitats in these biodiversity hotspots correspond to only 2.5% of Earth’s land surface, but still have more than 50% of endemic plant species and nearly 43% of endemic amphibian, reptile, bird, and mammal species in the world (Conservation International, 2021). Thus, these regions are among the most vulnerable ecosystems to the drivers of biodiversity loss. Anatolia (the Asian part of Turkey) is one of these regions because it is the region where three of these biodiversity hotspots meet, and interact: the (1) Caucasus, (2) Irano-Anatolian, and (3) Mediterranean Basin biodiversity hotspots.

E-mail address: hakangur.ecology@gmail.com.

<https://doi.org/10.1016/j.ecoinf.2022.101693>

Received 12 September 2021; Received in revised form 23 May 2022; Accepted 23 May 2022

Available online 26 May 2022

1574-9541/© 2022 Elsevier B.V. All rights reserved.

This means that Anatolia has a high biodiversity and a high percentage of life found nowhere else in the world, but has lost most of its original natural vegetation. In other words, Anatolia is one of the world's biologically richest and most threatened terrestrial regions (Conservation International, 2021; see also Gür, 2016, 2017a, 2017b; Özüdođru et al., 2020).

Anatolian ground squirrels, *Spermophilus xanthoprimum* (Bennet, 1835), are group-living, diurnal, hibernating, and pre-dominantly herbivorous, burrowing ground-dwelling squirrels (Kart Gür and Gür, 2010). Anatolian ground squirrels hibernate individually in underground burrows, about from late summer to early spring (Gür and Kart Gür, 2005; Kart Gür et al., 2009; Kart Gür and Gür, 2010, 2015, 2017). Anatolian ground squirrels range about from 800 to 2900 m and inhabit steppe or anthropogenic steppe areas (for detailed information on the Anatolian steppes, see FAO-TOB, 2020) throughout the central and eastern Anatolia, with minor range extensions into the western Armenia and northwestern Iran, but do not inhabit large steppe areas generally <1000 m in the southeastern Anatolia (Gür, 2013; Kart Gür and Gür, 2010; Krystufek and Vohralík, 2005, 2012). So, Anatolian ground squirrels are distributed mainly in the Anatolian section of the Irano-Anatolian biodiversity hotspot, excluding its middleeastern Anatolian part (Kart Gür and Gür, 2017; Fig. 1). The Irano-Anatolian biodiversity hotspot contains 2500 endemic plant species and retains 3.6% of hotspot area as natural intact vegetation (Habel et al., 2019; Sloan et al., 2014). By the year 2050, it is projected to experience a significant change in climate for 15–24% of hotspot area and to lose all accessible natural intact vegetation to agriculture and therefore all endemic plant species (Habel et al., 2019). Already, Anatolian steppes, all located in the Irano-Turanian phytogeographical region, are the most threatened ecosystems among all natural ecosystems due to human activities (FAO-TOB, 2020).

Anatolian ground squirrels are considered as 'Near Threatened' "due to population declines estimated at 20-25% over the last 10 years as a result of habitat conversion for agriculture, especially in central Anatolia" and also almost qualified as "Vulnerable" under criterion A2c because agriculture, a key part of Turkey's economy, continues to be developed (Yigit and Ferguson, 2020). Contrary to that of most temperate (mid-latitude) species, Anatolian ground squirrels expanded rather than contracted their range during the glacial periods and contracted rather than expanded their range during the interglacial periods. According to this impact of the Late Quaternary glacial-interglacial cycles, ongoing climate change should also have been contributing to this population decline (Gür, 2013). Thus, Anatolian ground squirrels are of

most immediate concern because they currently contract their range and lose their habitats and therefore are expected to face increased threat with further increases in global temperature and land-use.

In this study, the future impact of climate and land-use changes on Anatolian ground squirrels was assessed. Accordingly, following a modelling framework that combines the impact of climate and land-use changes on habitat suitability (i.e. suitable habitats across suitable bioclimatic areas; Baisero et al., 2020), a hierarchical approach with two steps was used. First, ecological niche modelling, widely used to predict the impact of climate change on the distribution patterns of species (Franklin, 2010; Peterson et al., 2011), with the presence records (from the project directed by the author) and bioclimatic data (from the WorldClim database for the present and future; Fick and Hijmans, 2017), was used to assess the impact of climate change in areas accessible to Anatolian ground squirrels through dispersal (i.e. the impact of climate change). Gür (2013) suggests that climate is one of the main factors that limit the geographical distribution of Anatolian ground squirrels and therefore they represent an ideal study system for niche modelling. Second, based on the habitat preferences of ground squirrels (Kart Gür and Gür, 2010; Krystufek and Vohralík, 2005, 2012; Thorington Jr et al., 2012), land-use data (from the Land-Use Harmonization dataset for the present and future; Hurtt et al., 2020) were used to assess the impact of land-use change in suitable bioclimatic areas for Anatolian ground squirrels under present and future conditions (i.e. the combined impact of both changes). Thus, the prediction that Anatolian ground squirrels face increased threat with further increases in global temperature and land-use was tested. Also, priority areas for the conservation of Anatolian ground squirrels were identified based on in-situ climate change refugia.

2. Methods

2.1. Ecological niche modelling

For Anatolian ground squirrels (*S. xanthoprimum*), presence data (649 records, Fig. 1) were obtained from the Monitoring Project for the Effects of Environmental Changes on Ground Squirrels that also obtains presence records for ground squirrels living in Anatolia, mostly by field studies throughout the active season, especially in the spring. 63 of these data were from Gündüz et al. (2007) (referring to the localities in which at least one individual were sampled), 127 from scientists and citizen scientists and validated by the author (referring to the localities in which

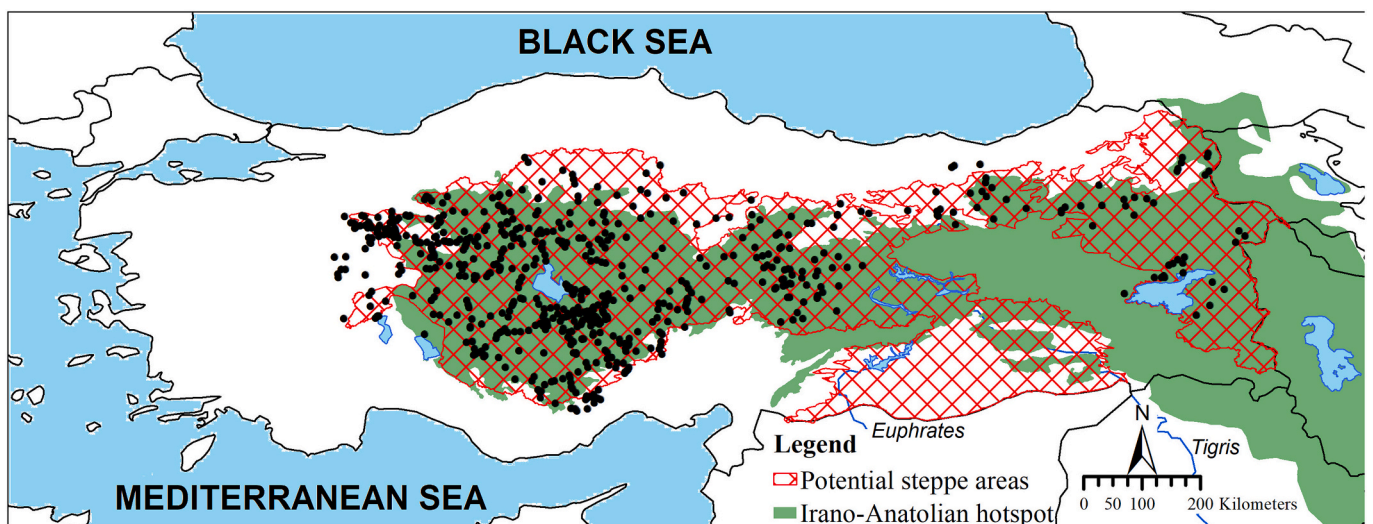


Fig. 1. The geographic distribution (all presence records from the Monitoring Project for the Effects of Environmental Changes on Ground Squirrels, black circles) of Anatolian ground squirrels (*Spermophilus xanthoprimum*), with potential steppe areas in Anatolia (the Nature Conservation Center, DKM, and Ambarlı et al., 2016) and the Irano-Anatolian hotspot in the study area (Conservation International, 2021). The visible area in maps is 25° to 46°E and 35° to 43°N.

at least one individual was observed incidentally), and 459 from field studies made by the author as a part of the monitoring project (referring to the localities in which at least one burrow entrance with feces around it and/or one individual was observed). All these records are georeferenced. The date range of these records spanned 1990s-2019 (mostly on 2015–2019). To reduce the effects of spatial sampling biases (Boria et al., 2014), the presence records were spatially filtered as follows, using the software SDMtoolbox v2.4 (Brown et al., 2017). First, environmental heterogeneity was calculated using a moving window approach (5×5 pixels of 2.5 arc-minutes) and the first three principal components of bioclimatic variables (excluding BIO8, 9, 18, and 19 because of known spatial artefacts, i.e. artificial discontinuities in climate gradients; for bioclimatic variables, see below) and reclassified into three broad classes (representing low, medium, and high heterogeneity) using the equal area classification type. Then, the presence records were spatially filtered by reducing multiple records to a single record within 5, 10, and 15 km distances in areas of high, medium, and low environmental heterogeneity, respectively, resulting in 285 presence records (for detailed methodological descriptions, see Brown et al., 2017; Supplemental Fig. 1, Fig. 2).

Bioclimatic data were downloaded from the WorldClim database version 2.1 (Fick and Hijmans, 2017) at a spatial resolution of 2.5 arc-minutes (~ 4.6 km at the equator) for the present (1970–2000) and future (2030, average from 2021 to 2040, and 2050, average from 2041 to 2060). The WorldClim is the most commonly used climate database for ecological niche modelling studies (“> 12,400 citations, Web of Knowledge, March 2021”; Bobrowski et al., 2021). Future bioclimatic data from the Coupled Model Intercomparison Project Phase 6 [CMIP6, the downscaling and calibration (bias correction) was done with the WorldClim database version 2.1 as baseline climate; for further details, see the WorldClim database] are, in this study, based on four global climate models (BCC-CSM2-MR, CNRM-CM6-1, CanESM5, and MIROC6) and four coupled SSP(shared socio-economic pathways)/RCP (representative concentration pathways) scenarios: SSP1/RCP2.6 (sustainability-taking the green road/low forcing level), SSP2/RCP4.5 (middle of the road/medium forcing level), SSP3/RCP7.0 (regional rivalry-a rocky road/high forcing level), and SSP5/RCP8.5 (fossil-fueled development-taking the highway/high forcing level; for detailed information, see the WorldClim database and Riahi et al., 2017). These global climate models were selected from among eight different models in the WorldClim database (accessed on 22 August 2020) based on two criteria: institution (that each model was constructed in a different institute) and availability (unbroken links for all scenarios). The use of

different global climate models and scenarios allowed assessing uncertainty in ecological niche modelling due to a broad range of possible climate change futures. These data include 19 scenopoetic bioclimatic variables (not affected by the presence of the focal species; Peterson et al., 2011) derived from monthly temperature and precipitation values (for detailed descriptions of bioclimatic variables, see the WorldClim database and Supplemental Table 1; see also Booth et al., 2014). In addition to bioclimatic data, topographic data were downloaded from the EarthEnv project (Amatulli et al., 2018) at a spatial resolution of 5 km. These data include scenopoetic topographic continuous and categorical variables derived from digital elevation models (for detailed descriptions of topographic variables, see the EarthEnv project and Amatulli et al., 2018). Based on what is known about the ecology of ground squirrels (Gür, 2010, 2013; Gür et al., 2018; Gür and Kart Gür, 2012; Kart Gür and Gür, 2010) and niche modelling analyses over years, that is a part of the Monitoring Project for the Effects of Environmental Changes on Ground Squirrels, three sets of non-collinear ($r < 10.80$) variables were created to account for multicollinearity (for a similar approach, see Gür et al., 2018; Supplemental Table 1, 2 and Supplemental Fig. 2). All these variables were masked to include Anatolia and surrounding areas (i.e. the study area, 25° to 46° E and 35° to 43° N; Gür, 2013; Fig. 1) and resampled to a spatial resolution of 2.5 arc-minutes, thereby matching the resolution of bioclimatic and topographic data.

To model the Grinnellian niche (focusing on a species' scenopoetic requirements, but not on the effects of the species on a given habitat, as considered by Charles Elton; Peterson et al., 2011; Anderson, 2013) and to infer bioclimatic suitability (or suitable bioclimatic areas) throughout the study area in the present and future for Anatolian ground squirrels, the software Maxent v3.4.1 (Phillips et al., 2017) was used because it requires presence-only data (not including any information on absence or non-detection; Peterson et al., 2011) and, in the circumstance of that data are presence-only format (as in this study), is a better choice over complicated, computationally intensive ‘black-box’ ensemble models (Kaky et al., 2020; for a supportive finding by using an ensemble approach, see Supplemental Box 1). The optimal set of variables and model settings (Elith et al., 2011; Merow et al., 2013) were selected in the software WALLACE v1.0.6.3, which “is an open-source GUI application that offers user-friendly access to R-scripted modern workflows” (Kass et al., 2018; for detailed methodological descriptions, see Muscarella et al., 2014; for a Turkish tutorial, see Gür, 2019), as follows. To select the background extent (or calibration area), a minimum convex polygon was created from the presence records to which a 2 degree buffer was applied (Supplemental Fig. 3). This extent represents areas

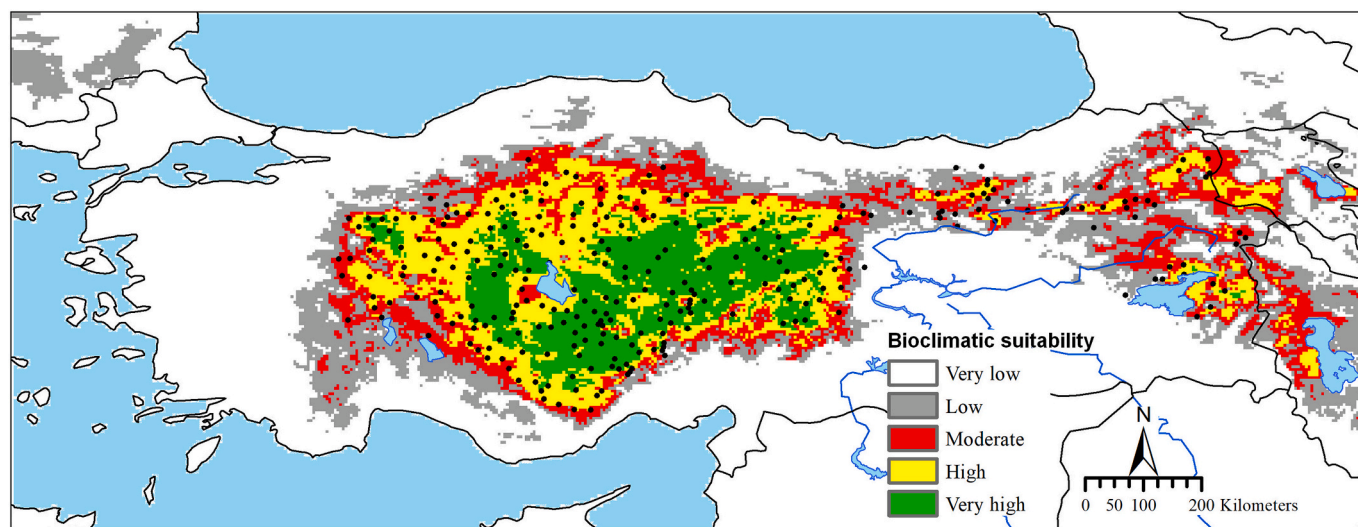


Fig. 2. Bioclimatic suitability under present (1970–2000) conditions for Anatolian ground squirrels (*Spermophilus xanthopyrmnus*). Black circles indicate 285 presence records. Number of the presence records for bioclimatic suitability classes: very low = 4, low = 22, moderate = 60, high = 112, very high = 87.

accessible to Anatolian ground squirrels through dispersal, termed M (Soberón and Peterson, 2005), based on that Anatolian ground squirrels range about from 800 to 2900 m and therefore the absence of any barrier to dispersal within this extent (see the comparison of elevations of suitable bioclimatic areas and the background extent in Table 3). To ensure a full representation of environments available for Anatolian ground squirrels, following Guevara et al. (2018), all pixels within this extent was sampled as the background data ($n = 55,079$ pixels of 2.5 arc-minutes). To select the optimal set of variables and to regulate model complexity, 150 candidate models were tested by combining (a) three sets of non-collinear variables, (b) five combinations of feature classes (linear; linear and quadratic; hinge; linear, quadratic, and hinge; linear, quadratic, hinge, and product), and (c) ten values of regularization multiplier (0.5 to 5 in increments of 0.5). To calculate model evaluation statistics (for detailed methodological descriptions, see Muscarella et al., 2014; Kass et al., 2018; Table 1), first, the presence and background data (i.e. the entire, unpartitioned dataset) were partitioned into separate training and testing bins for k-fold cross-validation, using a spatial approach (block, $k = 4$) that partitions data according to the latitudinal and longitudinal lines, resulting in four bins of (as far as possible) equal numbers (Supplemental Fig. 3), which is especially relevant in cross-time or cross-space model transfer. Then, five models were tested for each candidate model: four out of these models were iteratively built using three out of four bins for model training and the withheld bin for model testing to calculate threshold-independent (AUC_{TEST} and AUC_{DIFF}) and threshold-dependent (OR_{MIN} , ‘Minimum Training Presence’ omission rate and OR_{10} , 10% training omission rate) evaluation statistics (averaged over the iteration), and one using the entire, unpartitioned dataset (corresponding to all four bins) to calculate the Akaike information criterion corrected for small sample sizes ($AICc$). The optimal set of variables and model settings were selected based on the model with the highest performing in terms of overfitting and discrimination from among candidate models with delta $AICc$ values of ≤ 2 .

After the optimal set of variables and model settings were determined, a final model was developed using the entire, unpartitioned dataset (i.e. 285 presence records and 55,079 background points) and projected onto present and future conditions for the study area, with three options of extrapolation: unconstrained extrapolation, extrapolation with clamping, and no extrapolation (but only the results of unconstrained extrapolation are presented because the results of three options of extrapolation were similar, suggesting that extrapolation is not a critical issue). Multivariate environmental similarity surface (MESS) analysis (Elith et al., 2010) was performed to identify analog (similar) and non-analog (novel) conditions and extrapolation risks in model transfers. This analysis also provided information about which variable is driving novel conditions at any given pixel (i.e. the most dissimilar variable; Elith et al., 2010). Response curves [corresponding to a graph of the species’ response (here, bioclimatic suitability) on the y-axis, versus the variable itself on the x-axis; Anderson, 2013] were

used to evaluate how each variable affects the prediction. Relative contribution of each variable to the final model was determined using a jackknife test. Model performance and significance were evaluated by a partial ROC analysis (Peterson et al., 2008), as implemented in the software ntbox (NicheToolBox) v0.6.0.1 (Osorio-Olvera et al., 2020). This analysis was run with the following settings: proportion of omission = 0.05, percentage of random points = 50, and number of iterations for the bootstrap = 1000. Also, response curves were examined if they are biologically logical.

Cloglog output (ranging from 0 to 1, with 0 indicating low and 1 indicating high suitability) was selected to map bioclimatic suitability (Phillips et al., 2017). To interpret easily, bioclimatic suitability maps were categorized into five classes: very low suitability (< 0.2), low suitability (0.2–0.4), moderate suitability (0.4–0.6), high suitability (0.6–0.8), and very high suitability (> 0.8). Areas of moderate, high, very high suitability were also defined as suitable bioclimatic areas based on the ‘10 percentile training presence’ threshold (= 0.409). Explain tool from Maxent (Elith et al., 2010) was used to investigate which variables are driving bioclimatic suitability at any given pixel in the study area. To reduce the number of maps and to facilitate the explanation of the results, only one map for each scenario (SSP1/RCP2.6, SSP2/RCP4.5, SSP3/RCP7.0, and SSP5/RCP8.5) for each time period (2030 and 2050) in the future as an average of four global climate models was presented. Areas of expansion, no change, and contraction in suitable bioclimatic areas under future conditions were calculated using the software SDMtoolbox v2.4 (Brown et al., 2017). Areas predicted suitable both in the present and future (across 2030 and 2050 for each scenario) were classified as in-situ climate change refugia (i.e. portions of a species’ present distribution projected to retain suitable conditions through time; Ashcroft, 2010) in 2050 (Beaumont et al., 2019).

2.2. Land-use data

Land-use data were downloaded from the Land-Use Harmonization dataset version 2 (LUH2 v2f Release; Hurtt et al., 2020) at a spatial resolution of 0.25 degree (= 15.0 arc-minutes or ~28 km at the equator) for the present (2015) and future (2030 and 2050). This dataset provides the fraction of each of 12 land-use states for each cell, annually for the time period 850–2100. Land-use data from the Coupled Model Inter-comparison Project Phase 6 (CMIP6) are, in this study, based on four coupled SSP/RCP scenarios [SSP1/RCP2.6 (from IMAGE), SSP2/RCP4.5 (from MESSAGE-GLOBIOM), SSP3/RCP7.0 (from AIM), and SSP5/RCP8.5 (from REMIND-MAGPIE); for detailed information, see the LUH2 dataset and Riahi et al., 2017]. The use of different scenarios allowed assessing uncertainty due to a broad range of possible land-use change futures. These data include 12 different land-use states: forested and non-forested primary and secondary lands, grazing lands (pasture and rangeland), urban land, and crops (C3 and C4 annual, C3 and C4

Table 1
Model evaluation statistics of candidate models with delta $AICc$ values of ≤ 2 ordered based on decreasing mean AUC_{TEST} value.

Candidate models / variables	FC	RM	Mean AUC_{TEST}	Variance AUC_{TEST}	Mean AUC_{DIFF}	Variance AUC_{DIFF}	Mean OR_{MIN}	Variance OR_{MIN}	Mean OR_{10}	Variance OR_{10}	$AICc$	Delta $AICc$	PM
BIO2,3,4,10,15,16,17, TRI	LQH	3.5	0.810	0.005	0.065	0.007	0.032	0.001	0.250	0.071	5709.032	1.929	22
BIO2,3,4,10,15,16,17, TRI	LQH	3.0	0.808	0.005	0.068	0.008	0.049	0.005	0.271	0.069	5707.103	0.000	23
BIO2,3,4,10,15,16,17, TRI	LQ	0.5	0.799	0.010	0.081	0.010	0.081	0.018	0.295	0.053	5708.293	1.190	12
BIO2,3,4,11,15,16,17, TRI	LQHP	3.0	0.791	0.006	0.084	0.010	0.077	0.014	0.316	0.060	5707.919	0.816	22

For detailed descriptions of variables, see Supplemental Table 1. FC, feature classes (L = Linear, Q = Quadratic, H = Hinge, P = Product). RM, regularization multiplier. AUC_{TEST} , value of the area under the curve of the receiver operating characteristic (ROC) plot calculated based on testing bins. AUC_{DIFF} , the difference between training and testing AUC. OR_{MIN} , minimum training presence omission rate. OR_{10} , 10% training omission rate. $AICc$, the Akaike information criterion corrected for small sample sizes. Delta $AICc$, the difference between the lowest $AICc$ and each $AICc$. PM, number of parameters in candidate models.

perennial, and C3 nitrogen-fixing).

Based on what is known about the habitat preferences of ground squirrels (Kryštufek and Vohralík, 2005, 2012; Kart Gür and Gür, 2010; Thorington Jr et al., 2012; note that Anatolian ground squirrels inhabit steppe or anthropogenic steppe areas, see Introduction) and the International Union for Conservation of Nature (IUCN) habitat classification scheme (Habitats: Grassland; Yiğit and Ferguson, 2020) and also following Powers and Jetz (2019), non-forested primary and secondary lands were defined as suitable land-uses (i.e. habitats) for Anatolian ground squirrels. To infer habitat suitability (i.e. suitable habitats across suitable bioclimatic areas) in the present and future, following a modelling framework that combines the impact of climate and land-use changes (Baiero et al., 2020), suitable habitats were calculated for each cell, intersected with suitable bioclimatic areas under present and future conditions, respectively [i.e. (the proportion of non-forested primary land + the proportion of non-forested secondary land) x cell area, km²; a layer of cell area were downloaded from the LUH2 v2f Release]. This approach allowed assessing the combined impact of climate and land-use changes [note that in this study, habitat suitability does not necessarily imply suitability based on factors (e.g. soil types) other than bioclimatic conditions and land-use states]. To interpret easily, habitat suitability maps were categorized into five classes: very low suitability (< 125 km²), low suitability (125–250 km²), moderate suitability (250–375 km²), high suitability (375–500 km²), and very high suitability (> 500 km²; note that, in the study area, the area of a grid cell is ~600 km²).

All GIS operations were conducted using the software ArcGIS v10.2.2.

3. Results

3.1. The impact of climate change

150 candidate models were tested based on different sets of non-collinear variables and model settings. The final model was developed using input variables of BIO2, 3, 4, 10, 15, 16, 17, and TRI (terrain ruggedness index); feature classes of linear, quadratic, and hinge; and a regularization multiplier of 3.5 (Table 1). This model used all of eight input variables (Supplemental Fig. 4) and performed better than a random prediction (statistics for AUC ratio, mean ± SD = 1.73 ± 0.02, range = 1.67–1.77, $P < 0.001$).

Univariate response curves were bell-shaped for almost all of input variables and, if any, truncated when bioclimatic suitability is decreasing and low (see also Supplemental Fig. 5), suggesting that the background extent (or calibration area) contains the full range of scenopoetic conditions that Anatolian ground squirrels (*S. xanthoprimum*) can inhabit (at least for input variables) or that the 'niche space assumption' (Anderson, 2013) is met. This further supports that extrapolation is not a critical issue (see Methods). Marginal response curves indicated that Anatolian ground squirrels primarily inhabit flat areas with colder, drier, and more seasonal bioclimatic conditions (see also Supplemental Fig. 6, Supplemental Table 3). However, the variables that most contributed to the final model and therefore most influenced the geographic distribution of Anatolian ground squirrels were mean temperature of the warmest quarter (i.e. summer temperature), BIO10 (having the most useful information that is not present in the other variables) and precipitation of the wettest quarter, BIO16 (having the most useful information by itself) (Supplemental Fig. 7). Accordingly, judging by corresponding response curves (Supplemental Fig. 6), bioclimatic suitability decreased with increasing summer temperature (especially >20 °C) and precipitation in the wettest quarter (generally occurring during spring with low precipitation in the central and northeastern Anatolia, and during autumn or winter with high precipitation in the other parts of Anatolia) (see Supplemental Fig. 2 and Öztürk et al., 2017).

Under present conditions, suitable bioclimatic areas (i.e. areas of

moderate, high, very high suitability; 255,913 km², 21.4% of the study area) were predicted mainly throughout the central and northeastern (Erzurum-Kars Plato and the north and east of Lake Van) Anatolia and adjacent Armenia and Iran (i.e. the Anatolian section of the Irano-Anatolian biodiversity hotspot, excluding its middleeastern Anatolian part). All these areas largely matched the geographical distribution of Anatolian ground squirrels (Figs. 1 and 2), suggesting that they are near to equilibrium with scenopoetic conditions (i.e. the equilibrium distribution) or that the 'noise assumptions' (Anderson, 2013) are met. Accordingly, large steppe areas in the southeastern Anatolia were correctly predicted to have very low suitabilities (Figs. 1 and 2), driven by high summer temperatures (Supplemental Fig. 8).

Coupled SSP/RCP scenarios (averaged over global climate models) predict summer temperature 2.4–2.7 °C and 2.9–4.5 °C hotter and precipitation in the wettest quarter almost the same both in the background extent and suitable bioclimatic areas under present conditions in the future (2030 and 2050, respectively). Summer temperature increases are large for each scenario for each time period in the future, but the most drastic towards the high forcing level scenario (i.e. RCP8.5) and 2050 (Supplemental Table 3), especially for inner Anatolia. Under these future conditions, suitable bioclimatic areas were projected to decline by 32.8–41.6% (RCP7.0 on the low and RCP8.5 on the high end) and 46.5–76.4% (RCP2.6 on the low and RCP8.5 on the high end) in 2030 and 2050, respectively (Table 2, Fig. 3, see also Supplemental Fig. 9), mainly due to summer temperature increases (Supplemental Fig. 10). The impact of climate change was highly drastic for each scenario for each time period in the future, but, as expected, the most drastic towards the highest forcing level scenario (i.e. RCP8.5) and 2050 (Table 2), with the greatest loss of suitable bioclimatic areas at lower elevations (Table 3) and in the western part of the central Anatolia and in the eastern Anatolia (Fig. 3). Thus, in-situ climate change refugia (58,838–134,499 km², 23.0–52.6% of suitable bioclimatic areas under present conditions, RCP8.5 on the low and RCP2.6 on the high end; Table 4) were projected mainly in the eastern and southeastern parts of the central Anatolia (Fig. 4), suggesting these regions as priority areas for the conservation of Anatolian ground squirrels. These results are broadly agreed upon by all global climate models (Supplemental Fig. 11). Moreover, novel conditions were located mainly in the southeastern part of the study area (Supplemental Fig. 12), especially for summer temperature.

3.2. The impact of land-use change

Suitable habitats were 46.3% (118,575 km²) of suitable bioclimatic areas under present conditions (Fig. 5), suggesting that, as expected, land-use change already has a large impact on Anatolian ground squirrels. Habitat suitability (i.e. suitable habitats across suitable bioclimatic areas) was projected to decline further by 13.0–43.9% (SSP1/RCP2.6 on the low and SSP2/RCP4.5 on the high end) and 18.5–67.7% (SSP1/RCP2.6 on the low and SSP5/RCP8.5 on the high end) in 2030 and 2050, respectively (Table 2, Fig. 6). The combined impact of climate and land-use changes was highly drastic for each scenario for each time period in the future, but, as expected, the most drastic towards 2050, with marked differences between the sustainability (i.e. the world shifting gradually, but pervasively, towards a more sustainable path, depicting expansion of forests and other natural lands)/low forcing level scenario (i.e. SSP1/RCP2.6) and the other ones (depicting some expansion of overall cultivated lands and higher forcing levels; Table 2, Fig. 6). When the impact of climate and land-use changes was quantified separately, climate change appeared as the main driver of habitat loss because habitat suitability were generally projected to remain almost same across suitable bioclimatic areas under present conditions in the future (2030 and 2050), except for the increase for SSP1/RCP2.6 (see above) and the decline for SSP2/RCP4.5 (i.e. the world following a path in which social, economic, and technological trends do not shift markedly from historical patterns/medium forcing level) (Table 2). Suitable habitats within

Table 2

Bioclimatic suitability (i.e. suitable bioclimatic areas, km²) and habitat suitability (i.e. suitable land-uses/habitats across suitable bioclimatic areas, km²) under present and future conditions (i.e. for each scenario, SSP1/RCP2.6, SSP2/RCP4.5, SSP3/RCP7.0, and SSP5/RCP8.5, for each time period, 2030 and 2050) for Anatolian ground squirrels (*Spermophilus xanthoprymus*).

		Present	2030				2050			
			SSP1/2.6	SSP2/4.5	SSP3/7.0	SSP5/8.5	SSP1/2.6	SSP2/4.5	SSP3/7.0	SSP5/8.5
CC	Expansion	–	2882	2025	2959	2220	1791	2375	1713	1246
	Suitable areas in both	–	168,143	166,001	169,077	147,271	135,199	105,333	82,670	59,150
	Total suitable areas	255,913	171,024	168,026	172,037	149,490	136,991	107,708	84,383	60,396
	Contraction	–	87,771	89,912	86,836	108,642	120,714	150,581	173,244	196,764
	Unsuitable areas in both	–	936,895	937,752	936,817	937,557	937,985	937,401	938,063	938,531
	Total unsuitable areas	939,777	1,024,666	1,027,664	1,023,653	1,046,199	1,058,699	1,087,982	1,111,307	1,135,294
LUC	Suitable habitats	118,575	142,567	98,258	119,107	118,264	152,135	80,776	117,078	118,168
CC + LUC	Suitable habitats	118,575	103,132	66,529	84,643	75,735	96,634	40,455	48,458	38,341

CC, Climate Change. LUC, Land-Use Change. CC + LUC, Climate Change and Land-Use Change.

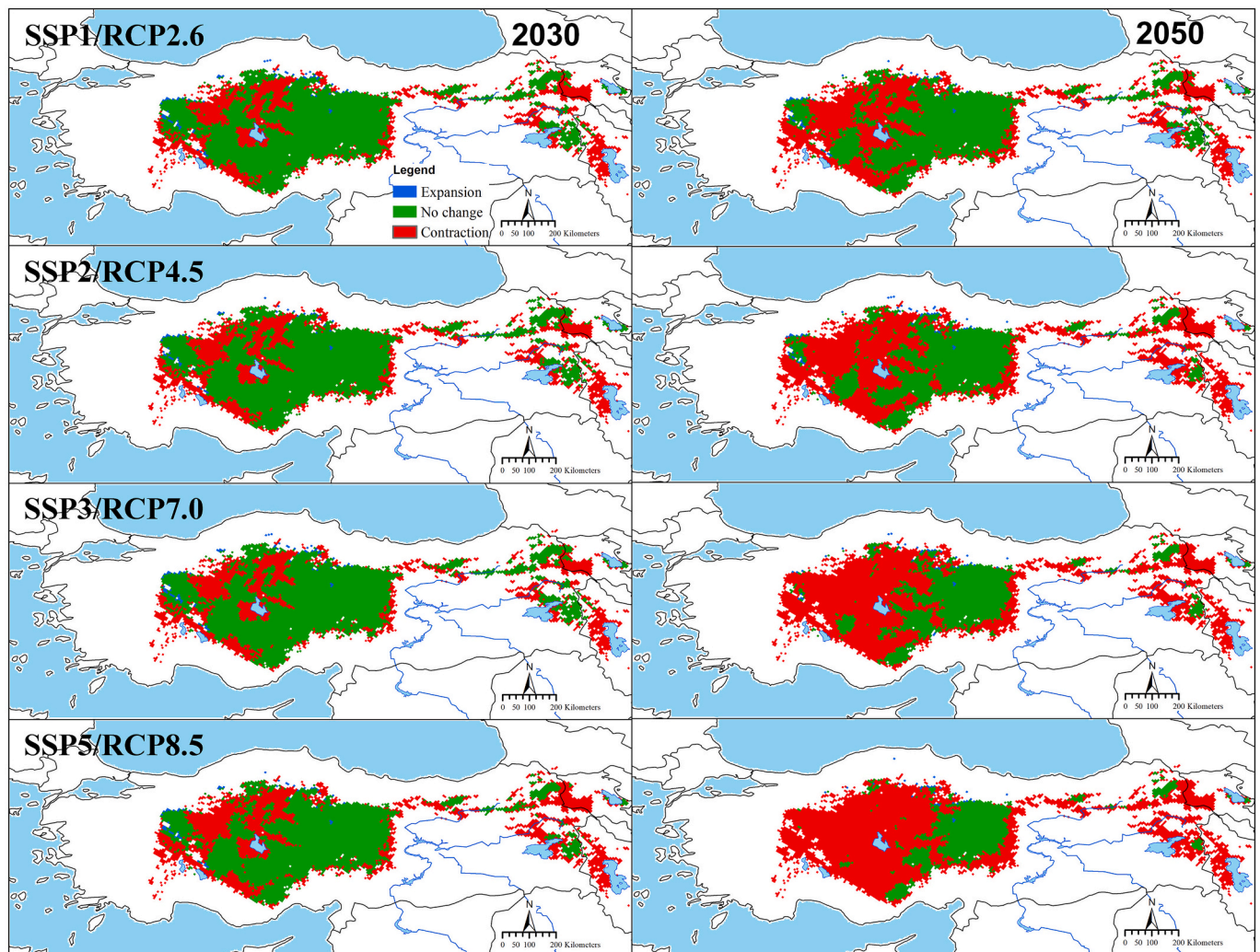


Fig. 3. Areas of expansion, no change, and contraction in suitable bioclimatic areas under future conditions (i.e. for each scenario, SSP1/RCP2.6, SSP2/RCP4.5, SSP3/RCP7.0, and SSP5/RCP8.5, for each time period, 2030 and 2050) for Anatolian ground squirrels (*Spermophilus xanthoprymus*).

in-situ climate change refugia were 31.4–80.9% (37,272–95,890 km², SSP5/RCP8.5 on the low and SSP1/RCP2.6 on the high end) of suitable habitats across suitable bioclimatic areas under present conditions (Table 4, Fig. 7).

4. Discussion

This study aimed to understand how climate and land-use changes

will affect Anatolian ground squirrels (*S. xanthoprymus*) in the future. Accordingly, following a modelling framework that combines the impact of climate and land-use changes (Baisero et al., 2020), a hierarchical approach with two steps was used: first, ecological niche modelling (Franklin, 2010; Peterson et al., 2011) was used to infer suitable bioclimatic areas (or bioclimatic suitability) throughout the study area in the present and future; and second, land-use data (Hurt et al., 2020) were used to infer suitable habitats across suitable

Table 3

Median (interquartile range) elevation of suitable bioclimatic areas under present (1970–2000) and future conditions (i.e. for each scenario, SSP1/RCP2.6, SSP2/RCP4.5, SSP3/RCP7.0, and SSP5/RCP8.5, for each time period, 2030 and 2050).

Present	2030				2050			
	SSP1/2.6	SSP2/4.5	SSP3/7.0	SSP5/8.5	SSP1/2.6	SSP2/4.5	SSP3/7.0	SSP5/8.5
1241 (1027–1616)	1307 (1090–1639)	1313 (1095–1644)	1316 (1095–1650)	1320 (1110–1631)	1380 (1158–1691)	1416 (1207–1693)	1516 (1278–1742)	1585 (1392–1787)

*Median (interquartile range and minimum-maximum) elevation (m) of the background extent = 1110 (679–1609 and 454–2917).

Table 4

Bioclimatic suitability (i.e. suitable bioclimatic areas, km²) and habitat suitability (i.e. suitable land-uses/habitats across suitable bioclimatic areas, km²) in in-situ climate change refugia for Anatolian ground squirrels (*Spermophilus xanthoprymnus*).

	Present	Climate Change Refugia			
		SSP1/ 2.6	SSP2/ 4.5	SSP3/ 7.0	SSP5/ 8.5
Bioclimatic suitability	255,913	134,499	104,787	82,436	58,838
Habitat suitability	118,575	95,890	39,216	48,094	37,272

bioclimatic areas (i.e. habitat suitability) under present and future conditions. This approach also allowed identifying priority areas for the conservation of Anatolian ground squirrels based on in-situ climate change refugia. This study represents a first attempt to combine niche modelling and land-use data for a species in Anatolia, which is one of the most vulnerable regions to the drivers of biodiversity loss (i.e. land-use change, direct exploitation of organisms, climate change, pollution, and invasion of alien species; [IPBES, 2019](#)) because it is the region where three of biodiversity hotspots meet, and interact ([Conservation International, 2021](#)).

Important advantage of this study is information about the distributional ecology of Anatolian ground squirrels that the Monitoring Project for the Effects of Environmental Changes on Ground Squirrels has provided. By May 2022, for Anatolian ground squirrels, over 1300 presence records were collected, and the field routes of many thousands of kilometers were recorded by GPS. However, important limitation of this study is the temporal mismatch between the presence records of Anatolian ground squirrels and bioclimatic data. This is due to absence of the most recent bioclimatic data (also in terms of availability of the future CMIP data) or lack of the presence records from the recent past.

Bioclimatic data were from the period 1970–2000, and the presence records were from the period 1990s–2019 (mostly after 2015). Such mismatch may be unavoidable for many of these kinds of studies, but the temporal range of presence and bioclimatic data should be matched whenever possible ([Roubicek et al., 2010](#)). Thus, future ecological niche modelling studies on Anatolian ground squirrels should also focus on this point.

Land-use change already has a large impact on Anatolian ground squirrels because suitable habitats were just 46% of suitable bioclimatic areas under present conditions. Even though populations have not been studied in any systematic way ([Kart Gür and Gür, 2010](#)), the International Union for Conservation of Nature (IUCN) Red List of Threatened Species estimates a 20–25% population decline over the last 10 years, due to large-scale agricultural activities that result in habitat loss and fragmentation, especially in the central Anatolia ([Yiğit and Ferguson, 2020](#)). This is not really a surprise when considered that in the present, 77% of land (excluding Antarctica) has been modified by the direct effects of human activities ([Pörtner et al., 2021](#)), and at least 50% of the original vegetation in Anatolian steppes has been ploughed during the last century ([Wesche et al., 2016](#)). Moreover, Biodiversity Intactness Index (estimating how much of an area’s natural biodiversity remains) indicates that land-use and related pressures have reduced local terrestrial biodiversity, especially in Anatolian steppes, over the recent years, 2000–2015 ([Newbold et al., 2016](#); Supplemental Fig. 13). Habitat suitability was projected to decline further by 19–69% in the future (depending on the scenario), mainly due to the loss of suitable bioclimatic areas (47–77%, depending on the scenario) at lower elevations and in the western part of the central Anatolia and in the eastern Anatolia (based on in-situ climate change refugia), suggesting that Anatolian ground squirrels will contract their range in the future, as predicted by [Gür \(2013\)](#) (see also Introduction). All these are compatible with that land-use change is the greatest threat to biodiversity in the present ([IPBES, 2019](#)), and climate change is likely to match or outpace land-use

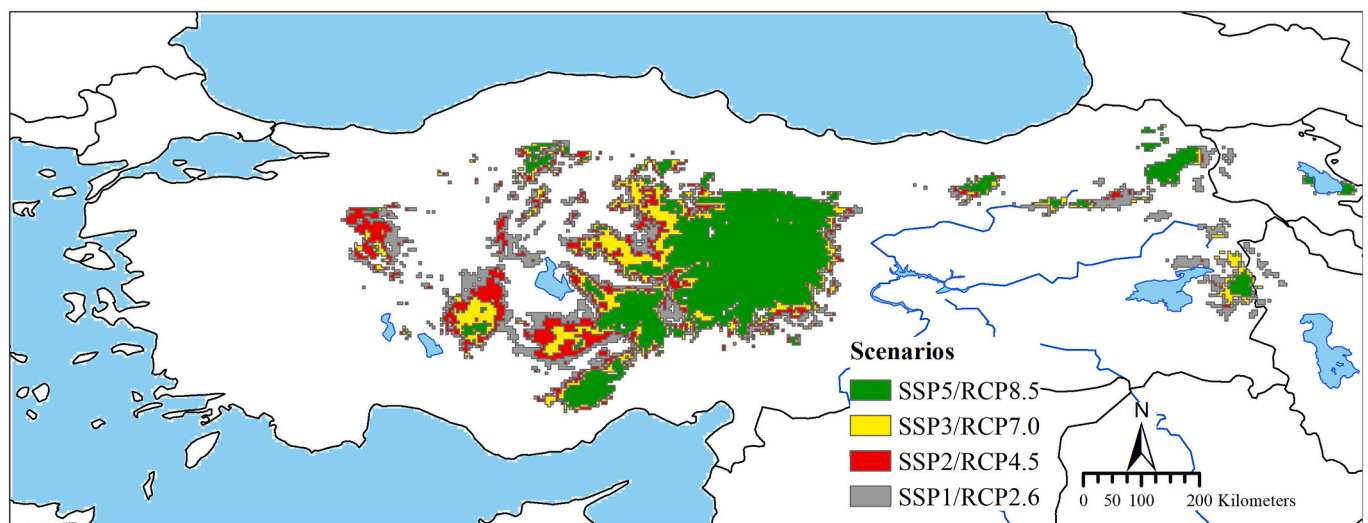


Fig. 4. In-situ climate change refugia (i.e. areas predicted suitable both in the present and future, across 2030 and 2050 for each scenario, SSP1/RCP2.6, SSP2/RCP4.5, SSP3/RCP7.0, and SSP5/RCP8.5) for Anatolian ground squirrels (*Spermophilus xanthoprymnus*).

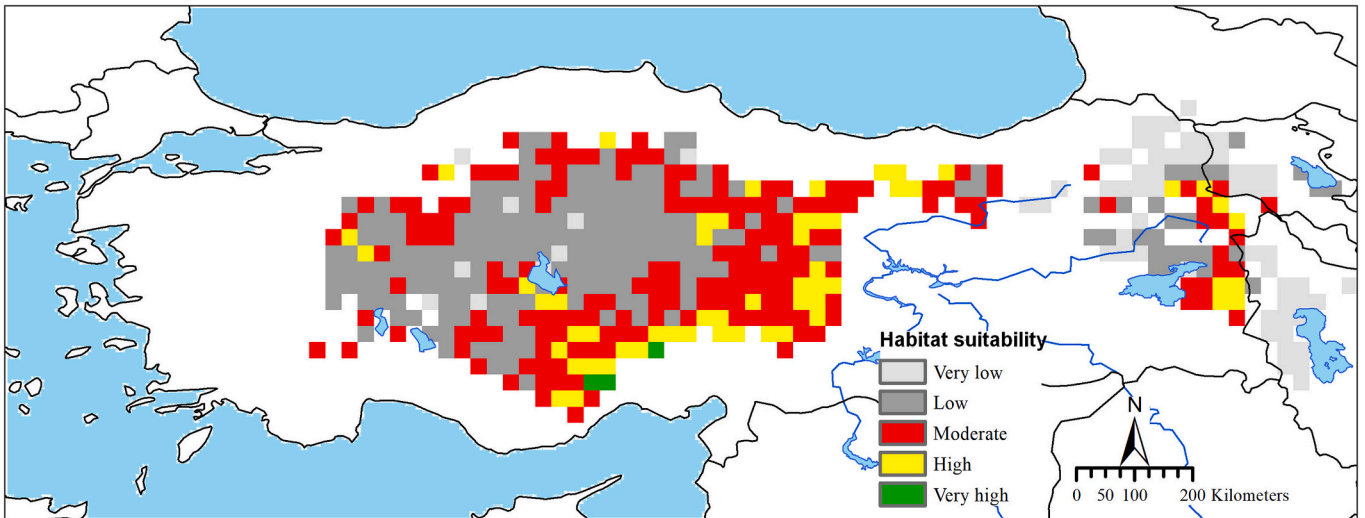


Fig. 5. Habitat suitability (i.e. suitable habitats across suitable bioclimatic areas) under present (1970–2000) conditions for Anatolian ground squirrels (*Spermophilus xanthoprymnus*).

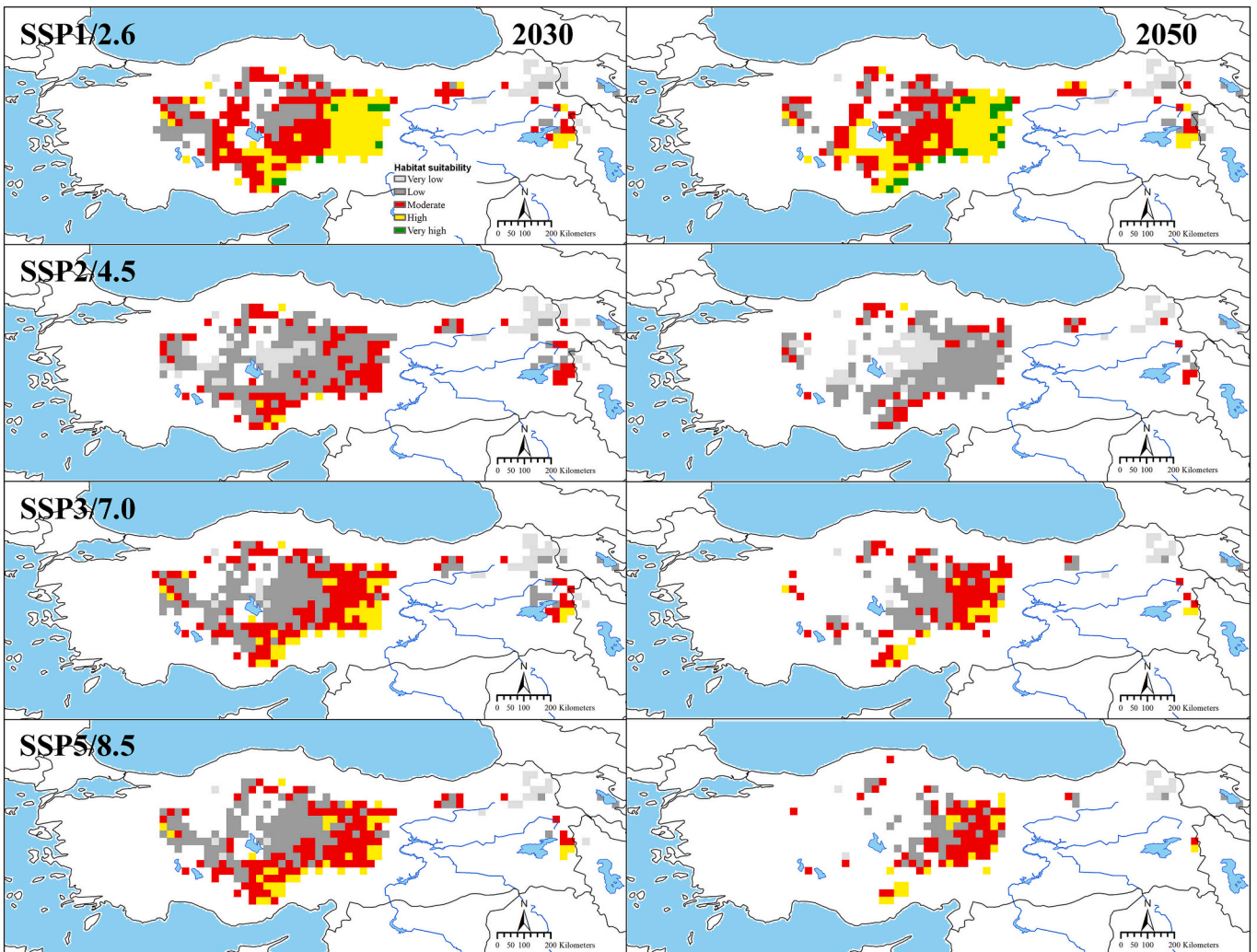


Fig. 6. Habitat suitability (i.e. suitable habitats across suitable bioclimatic areas) under future conditions (i.e. for each scenario, SSP1/RCP2.6, SSP2/RCP4.5, SSP3/RCP7.0, and SSP5/RCP8.5, for each time period, 2030 and 2050) for Anatolian ground squirrels (*Spermophilus xanthoprymnus*).

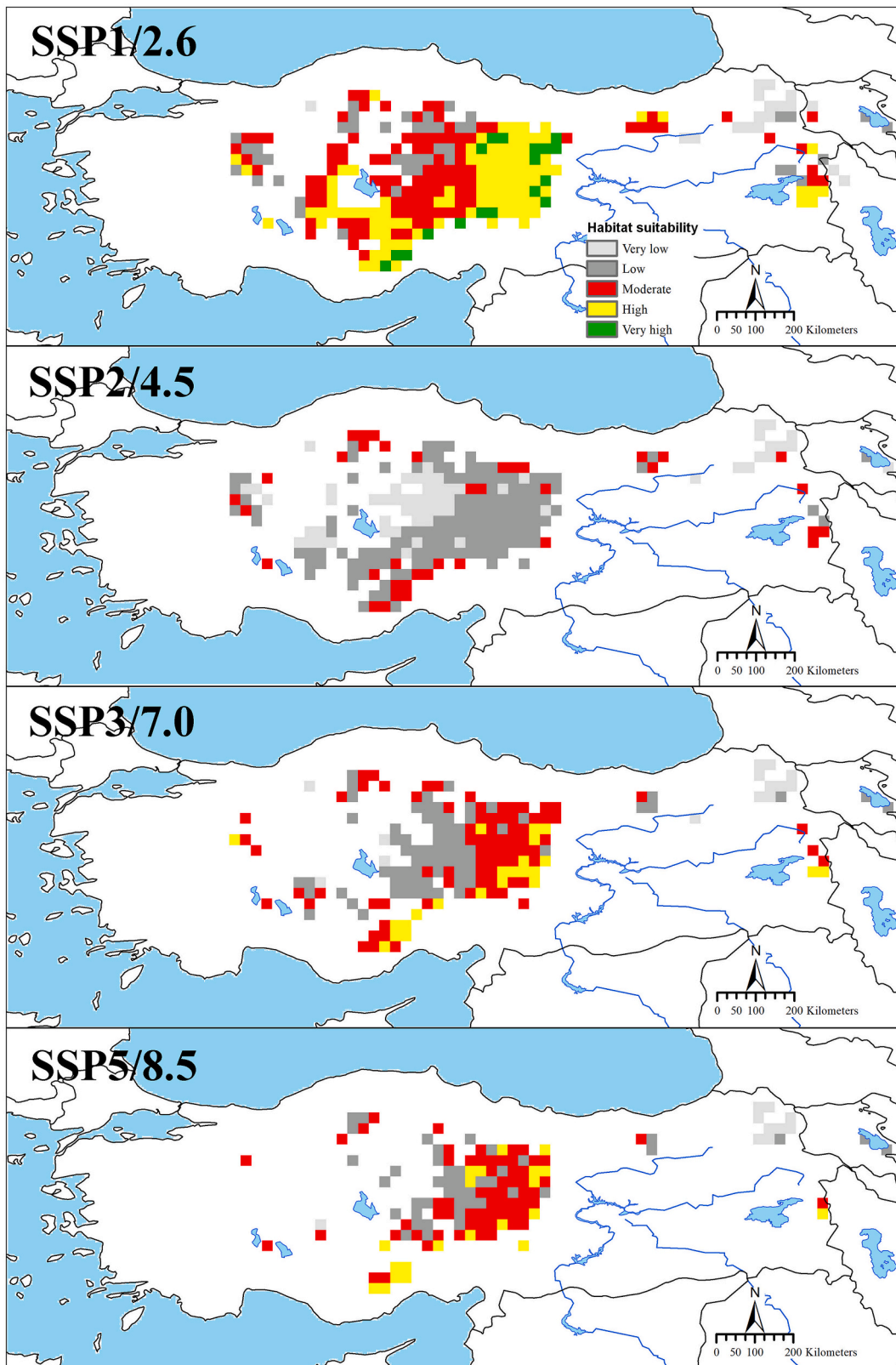


Fig. 7. Habitat suitability (i.e. suitable habitats across suitable bioclimatic areas) within in-situ climate change refugia (i.e. areas predicted suitable both in the present and future, across 2030 and 2050 for each scenario, SSP1/RCP2.6, SSP2/RCP4.5, SSP3/RCP7.0, and SSP5/RCP8.5) for Anatolian ground squirrels (*Spermophilus xanthopyrmnus*).

change in the future (Newbold, 2018). By the year 2050, habitat suitability is projected to decline by median 5–16% for 2827 species of mammals, due to climate change rather than land-use change (Baisero et al., 2020). By the year 2100, at 1.5 °C of global warming (above pre-industrial levels), 4% (2–7%) of 1769 species of mammals are projected to lose over half of their climatically determined ranges, and at 4.5 °C, this increases to 41% (29–57%) (Warren et al., 2018). Anatolian ground squirrels are one of these species and therefore greater decline in habitat suitability was projected for them than many species of mammals (19–69% vs. median 5–16%). By the year 2070, Turkey is already a projected hotbed for habitat loss (average decadal land-use change = 19.67%) and therefore habitat suitable range loss (average decadal loss = 1.03% for mammals) and up-listing to higher IUCN Red List status (species up-listed = 5.59% for mammals; Powers and Jetz, 2019). However, it is important to note here that the approach in this study does not allow assessing the impact of habitat fragmentation (i.e. the breaking apart of habitats) on metapopulation dynamics. Thus, future ecological niche modelling and/or genetic studies on Anatolian ground squirrels should also focus on this point.

Hibernating species of ground squirrels (the genus *Spermophilus* sensu lato; Helgen et al., 2009) have a short active season, in which to reproduce and store fat reserves for survival during hibernation (Thorington Jr et al., 2012; Yensen and Sherman, 2003). Thus, much of the time spent above ground is allocated to foraging (Everts et al., 2004). However, thermal environment imposes substantial constraints on patterns of above ground activity and therefore can structure time available for foraging (Long et al., 2005; Sharpe and Van Horne, 1999; Vispo and Bakken, 1993) because ground squirrels are relatively small and inhabit generally open habitats (Thorington Jr et al., 2012; Yensen and Sherman, 2003) and therefore are subject to heat stress (Long et al., 2005; Sharpe and Van Horne, 1999; Vispo and Bakken, 1993). As other hibernating species of ground squirrels, Anatolian ground squirrels have a short active season, with individuals active above ground for mean 5.1–6.4 and 3.9–4.7 months (depending on age-sex classes) for the central (Ankara population) and northeastern (Kars population) Anatolia, respectively (Kart Gür et al., 2009; Kart Gür and Gür, 2015, 2017). Individuals decrease above ground activity at midday during hot days. In these days, individuals in traps sometimes cool themselves by using evaporative cooling of salivation and even die quite quickly, especially when traps are not checked regularly (Kart Gür and Gür, 2010). These suggest that Anatolian ground squirrels are also sensitive to overheating. Thus, warmer temperatures may reduce the time spent above ground for foraging (Long et al., 2005; Sharpe and Van Horne, 1999; Vispo and Bakken, 1993). In addition, global warming has increased and will increase agricultural and ecological droughts in the Mediterranean region (including Anatolian steppes), “which results from combined shortage of precipitation and excess evapotranspiration, and during the growing season impinges on crop production or ecosystem function in general” (IPCC, 2021). All these, among other possible mechanisms, may influence life-history traits such as body mass, reproductive success, and survival of ground squirrels (Van Horne, 2003). However, the approach in this study is correlation-based, which limits the inferences about possible mechanisms. Moreover, further limitations and caveats, among others (see Anderson, 2017; Ashcroft, 2010; Baumgartner et al., 2018; Beaumont et al., 2019; Morelli et al., 2016; Morin and Thuiller, 2009), are, for example, that ecological niche modelling (1) assumes that the present records represent viable populations; (2) does not include any mechanistic relationships; (3) does not take phenotypic plasticity and local adaptation into account or (4) considers that biotic interactions affect the distribution patterns of species at finer grains and local geographic extents. Thus, future studies (e.g. mechanistic niche modelling, ecophysiological ones etc.) on Anatolian ground squirrels should also focus on all these points.

Anatolian ground squirrels are highly sensitive to climate and land-use changes and therefore may be assessed to make inferences about these changes and monitored for early warnings of changes in steppe

ecosystems (Siddig et al., 2016). Ground squirrels are keystone species and therefore their loss may have serious consequences. For example, burrowing affects soil fertility, plant species composition, and primary productivity; encourages water infiltration; alters soil ion exchange capacity, water holding capacity, organic matter content, and inorganic nutrient levels; provides habitats for plants and animals; and increases grassland heterogeneity and landscape diversity (Wesche et al., 2016; Yensen and Sherman, 2003). The present and future decline of Anatolian ground squirrels may threaten biodiversity in steppe areas because, for example, it may affect the specialized insects and produce a cascade effect on their predators. Anatolian ground squirrels are an important species in steppe areas for scarab dung beetle assemblages, with 12 ground squirrel-linked species (7 obligate +5 associate), accounting for 15.6% of 77 species found in ground squirrel dens and livestock dung. Thus, population decline in Anatolian ground squirrels may cause a predictable decrease in the richness of dung beetle assemblages (Carpaneto et al., 2011). Anatolian ground squirrels are also an important prey species in steppe areas for a wide range of reptilian, avian, and mammalian predators (Kart Gür and Gür, 2010). For example, breeding season diet of Saker Falcons (*Falco cherrug*) in Turkey typically comprises a greater proportion of Anatolian ground squirrels (61%, 35/57, of pellets and prey remains collected at three nest sites). Thus, population decline in Anatolian ground squirrels is identified as one of the main causes of decline in the number of Saker Falcon records in Turkey (Dixon et al., 2009). Thus, future studies on Anatolian ground squirrels should also focus on assessing their potential as an indicator species.

In-situ climate change refugia may facilitate the survival of existing populations and therefore the persistence of biodiversity especially during rapid climate change. Thus, one climate change adaptation strategy is to conserve these refugia to limit the impact of climate change in the 21st century (Ashcroft, 2010; Baumgartner et al., 2018; Beaumont et al., 2019; Morelli et al., 2016; Morin and Thuiller, 2009). Areas where these refugia are projected under most global climate models and coupled SSP/RCP scenarios may be sensible conservation targets because they are robust to uncertainty due to a broad range of possible climate change futures, leading to high stability in bioclimatic suitability (Baumgartner et al., 2018). For Anatolian ground squirrels, these areas were projected mainly in the eastern and southeastern parts of the central Anatolia, in which habitat suitability was also projected to be generally low and moderate (except for SSP1/RCP2.6). All these areas were generally located in the ‘Cool Temperate Dry’ zone of IPCC Climate Zones, i.e. in areas that are especially cooler than the surrounding region (Supplemental Fig. 14), suggesting that many populations outside this zone (i.e. in the ‘Warm Temperate Dry’ zone) are very vulnerable to climate change, irrespective of global climate models and scenarios. This will reduce overall genetic diversity because Anatolian ground squirrels are phylogeographically highly structured, with deep mitochondrial (mt) (sub)lineages restricted to small regions, or a large number of cytochrome *b* (cytb) mtDNA haplotypes (75%, 38 out of 51, based on data comprising 102 sequences from 70 localities) are restricted to a single locality (Gündüz et al., 2007; Harrison et al., 2003; Supplemental Fig. 15). Eurasian steppes are among the least protected ecosystems worldwide (Török et al., 2020). Accordingly, only a very small proportion of Anatolian steppes (and therefore in-situ climate change refugia for Anatolian ground squirrels) lies within the protected areas (Supplemental Fig. 16), majority of which are associated with wetlands, suggesting that the current protected areas are insufficient for the mitigation of climate and land-use change impacts on Anatolian steppes and their biodiversity (including Anatolian ground squirrels). One important question is that whether in-situ climate change refugia for Anatolian ground squirrels are hotspots of in-situ climate change refugia (regions suitable for >1 species). Thus, future studies should also focus on hotspots of in-situ climate change refugia in Anatolia.

5. Conclusion

This study represents a first attempt to combine niche modelling and land-use data for a species in Anatolia, one of the most vulnerable regions to the drivers of biodiversity loss, because it is the region where three of biodiversity hotspots meet, and interact. Habitat suitability was projected to decline by 19–69% in the future (depending on the scenario), mainly due to the loss of suitable bioclimatic areas (47–77%, depending on the scenario) at lower elevations and in the western part of the central Anatolia and in the eastern Anatolia, suggesting that Anatolian ground squirrels will contract their range in the future, mainly due to climate change. Thus, in-situ climate change refugia were projected mainly in the eastern and southeastern parts of the central Anatolia, suggesting these regions as priority areas for the conservation of Anatolian ground squirrels.

Declaration of Competing Interest

The authors have declared no competing interest.

Acknowledgments

I would like to acknowledge following scientists and citizen scientists for sharing their observations (although some of these data were not validated by the author) and participating in or being a guest in the field studies: E. Ada, S. Akkurt Gümüş, Ş. Aksan, L. Aktay, E. Aktoklu, İ. B. Altıparmak, B. Aslan, S. Avcı, E. Aytekin, E. Berberoğlu, C. Bilgin, M. Bulut, Ş. Bulut, L. Can, M. Çakır, M. Çelik, Ö. Çırpılı, H. Çohadar, M. A. Dağlı, Y. Demirbaş, A. Demirci, M. C. Demirok, A. Demirtaş, E. Dizdaroğlu, F. Duman, S. Ekşiöğlü, C. Elverici, M. Elverici, G. Ergan, Ö. Erişöz Kasap, S. Ertuğrul, Y. Erzi, B. Fırat, M. Gaffaroğlu, D. Geçit, M. Gökmen, M. Göktuğ, A. Güngördü, Hilal Gür, Semahat Gür, İ. Güzel, S. Irmak, S. İbri, Y. İlemin, Teoman Kankılıç, Tolga Kankılıç, Ç. Karacaoğlu, E. Karaçetin, M. Karakaya, Adem Karataş, E. Kart, Ö. Keşaplı Can, S. T. Körüklü, Ü. Malkaçoğlu from TRAMEM, D. Mengüllüoğlu, A. Öğretmen, İ. E. Özalın, E. Özay, O. Özbek, C. Özcan, M. Özcan, K. Özgişi, M. Z. Öztürk, B. Özüdoğru, Ü. Özyay, M. Poyraz, D. Ragyov, Z. Sakarya, İ. K. Sağlam, A. Sefalı, H. Sevgili, L. Sinav, D. Solak, M. Sözen, M. K. Şahin, N. Şalıklar, A. Şenel, F. M. Şimşek, H. Ö. Tat, B. Tatar, Ç. Tavşanoğlu, A. Tıraş, M. Toksoy, M. Topuz, A. Turak, O. Ç. Türkay, Y. Uçarlı, N. Usta, E. D. Ülker, Z. Ünal, F. Ünsal, O. Ürker, B. Yalgın, S. Yanardağ, İ. Yıldırım, H. Yılmaz, and T. Yorulmaz, and especially M. Kart Gür, with whom we have been working on ground squirrels for over 20 years. The Monitoring Project for the Effects of Environmental Changes on Ground Squirrels, accelerated in 2018 with a series of field studies, while largely self-funded, did receive a small amount of support from the Kırşehir Ahi Evran University Scientific Research Projects Coordination Unit (Project Numbers: PYO-FEN.4001.12.012, completed in 2014 and PYO-FEN.4001.15.008, completed in 2018) and carried out by the permission of Republic of Turkey Ministry of Agriculture and Forestry, General Directorate of Nature Conservation and National Parks.

Appendix A. Supplementary data

Supplementary data to this article can be found online at <https://doi.org/10.1016/j.ecoinf.2022.101693>.

References

Amatulli, G., Domisch, S., Tuanmu, M.-N., Parmentier, B., Ranipeta, A., Malczyk, J., Jetz, W., 2018. A suite of global, cross-scale topographic variables for environmental and biodiversity modeling. *Scientific Data* 5, 1–15.

Ambarlı, D., Zeydanlı, U.S., Balkız, Ö., Aslan, S., Karaçetin, E., Sözen, M., Ilgaz, Ç., Ergen, A.G., Lise, Y., Çağlayan, S.D., 2016. An overview of biodiversity and conservation status of steppes of the Anatolian biogeographical region. *Biodivers. Conserv.* 25, 2491–2519.

Anderson, R.P., 2013. A framework for using niche models to estimate impacts of climate change on species distributions. *Ann. N. Y. Acad. Sci.* 1297, 8–28.

Anderson, R.P., 2017. When and how should biotic interactions be considered in models of species niches and distributions? *J. Biogeogr.* 44, 8–17.

Ashcroft, M.B., 2010. Identifying refugia from climate change. *J. Biogeogr.* 37, 1407–1413.

Baisero, D., Visconti, P., Pacifici, M., Cimatti, M., Rondinini, C., 2020. Projected global loss of mammal habitat due to land-use and climate change. *One Earth* 2, 578–585.

Baumgartner, J.B., Esperón-Rodríguez, M., Beaumont, L.J., 2018. Identifying in situ climate refugia for plant species. *Ecography* 41, 1850–1863.

Beaumont, L.J., Esperón-Rodríguez, M., Nipperess, D.A., Wauchope-Drumm, M., Baumgartner, J.B., 2019. Incorporating future climate uncertainty into the identification of climate change refugia for threatened species. *Biol. Conserv.* 237, 230–237.

Bennet, E., 1835. Mammals of the neighbourhood of Trebizond and Erzeroum. *Proc. Zool. Soc. London* 89–90.

Bobrowski, M., Weidinger, J., Schickhoff, U., 2021. Is new always better? Frontiers in global climate datasets for modeling treeline species in the Himalayas. *Atmosphere* 12, 543.

Booth, T.H., Nix, H.A., Busby, J.R., Hutchinson, M.F., 2014. BIOCLIM: the first species distribution modelling package, its early applications and relevance to most current MAXENT studies. *Divers. Distrib.* 20, 1–9.

Boria, R.A., Olson, L.E., Goodman, S.M., Anderson, R.P., 2014. Spatial filtering to reduce sampling bias can improve the performance of ecological niche models. *Ecol. Model.* 275, 73–77.

Brown, J.L., Bennett, J.R., French, C.M., 2017. SDMtoolbox 2.0: the next generation Python-based GIS toolkit for landscape genetic, biogeographic and species distribution model analyses. *PeerJ* 5, e4095.

Carpaneto, G.M., Mazziotta, A., Pittino, R., Luiselli, L., 2011. Exploring co-extinction correlates: the effects of habitat, biogeography and anthropogenic factors on ground squirrels–dung beetles associations. *Biodivers. Conserv.* 20, 3059–3076.

Conservation International, 2021. Biodiversity Hotspots. viewed 31 August 2021, from <https://www.conservation.org/priorities/biodiversity-hotspots>.

Dixon, A., Ragyov, D., Ayas, Z., Deli, M., Demerdzhiev, D., Angelov, I., Kmetova, E., Nedyalkov, N., 2009. Population status of breeding Saker falcons (*Falco cherrug*) in Turkey. *Avian Biology Research* 2, 213–220.

Elith, J., Kearney, M., Phillips, S., 2010. The art of modelling range-shifting species. *Methods Ecol. Evol.* 1, 330–342.

Elith, J., Phillips, S.J., Hastie, T., Dudík, M., Chee, Y.E., Yates, C.J., 2011. A statistical explanation of MaxEnt for ecologists. *Divers. Distrib.* 17, 43–57.

Everts, L.G., Strijkstra, A.M., Hut, R.A., Hoffmann, I.E., Millesi, E., 2004. Seasonal variation in daily activity patterns of free-ranging European ground squirrels (*Spermophilus citellus*). *Chronobiol. Int.* 21, 57–71.

FAO-TOB, 2020. Ulusal Bozkır Koruma Strateji ve Eylem Planı. Doğa Koruma Merkezi, Türkiye'nin Bozkır Ekosistemlerinin Korunması ve Sürdürülebilir Yönetimi Projesi Yayını. 173 sayfa. Birleşmiş Milletler Gıda ve Tarım Örgütü (FAO), Tarım ve Orman Bakanlığı (TOB), Ankara.

Fick, S.E., Hijmans, R.J., 2017. WorldClim 2: new 1-km spatial resolution climate surfaces for global land areas. *Int. J. Climatol.* 37, 4302–4315.

Franklin, J., 2010. Mapping Species Distributions: Spatial Inference and Prediction. Cambridge University Press.

Guevara, L., Gerstner, B.E., Kass, J.M., Anderson, R.P., 2018. Toward ecologically realistic predictions of species distributions: a cross-time example from tropical montane cloud forests. *Glob. Chang. Biol.* 24, 1511–1522.

Gündüz, İ., Jaarola, M., Tez, C., Yeniçay, C., Polly, P.D., Searle, J.B., 2007. Multigenic and morphometric differentiation of ground squirrels (*Spermophilus*, Scuridae, Rodentia) in Turkey, with a description of a new species. *Mol. Phylogenet. Evol.* 43, 916–935.

Gür, H., 2010. Why do Anatolian ground squirrels exhibit a Bergmannian size pattern? A phylogenetic comparative analysis of geographic variation in body size. *Biol. J. Linn. Soc.* 100, 695–710.

Gür, H., 2013. The effects of the late quaternary glacial–interglacial cycles on Anatolian ground squirrels: range expansion during the glacial periods? *Biol. J. Linn. Soc.* 109, 19–32.

Gür, H., 2016. The Anatolian diagonal revisited: testing the ecological basis of a biogeographic boundary. *Zoology in the Middle East* 62, 189–199.

Gür, H., 2017a. Anadolu diyagonalı: Bir biyocoğrafi sınırın anatomisi / Anatolian Diagonal: Anatomy of a Biogeographical Boundary. *Kebikeç, İnsan Bilimleri İçin Kaynak Araştırmaları Dergisi* 43, 177–187.

Gür, H., 2017b. Geç Kuvaterner buzul buzullararası döngülerinin Anadolu'nun biyolojik çeşitliliği üzerine etkileri / the effects of the late quaternary glacial–interglacial cycles on the biodiversity of Anatolia. *Türkiye Jeoloji Bülteni / Geological Bulletin of Turkey* 60, 507–528.

Gür, H., 2019. Tür Dağılım Modellemesi ile İklim Değişikliği Uygulamaları. *Ekoloji ve Evrimsel Biyoloji Derneği Yayınları* No. 1. http://www.ekoeco.org/wp-content/uploads/2020/04/GurH_EkoEvo_2019.pdf.

Gür, H., Kart Gür, M., 2005. Annual cycle of activity, reproduction, and body mass of Anatolian ground squirrels (*Spermophilus xanthopyrmus*) in Turkey. *J. Mammal.* 86, 7–14.

Gür, H., Kart Gür, M., 2012. Is spatial variation in food availability an explanation for a Bergmannian size pattern in a north American hibernating, burrowing mammal? An information-theoretic approach. *J. Zool.* 287, 104–114.

Gür, H., Perkaş, U., Kart Gür, M., 2018. Do climate-driven altitudinal range shifts explain the intraspecific diversification of a narrow ranging montane mammal, Taurus ground squirrels? *Mammal Research* 63, 197–211.

Habel, J.C., Rasche, L., Schneider, U.A., Engler, J.O., Schmid, E., Rödder, D., Meyer, S.T., Trapp, N., Sos del Diego, R., Eggermont, H., 2019. Final countdown for biodiversity hotspots. *Conserv. Lett.* 12, e12668.

- Harrison, R.G., Bogdanowicz, S.M., Hoffmann, R.S., Yensen, E., Sherman, P.W., 2003. Phylogeny and evolutionary history of the ground squirrels (Rodentia: Marmotinae). *J. Mamm. Evol.* 10, 249–276.
- Helgen, K.M., Cole, F.R., Helgen, L.E., Wilson, D.E., 2009. Generic revision in the Holarctic ground squirrel genus *Spermophilus*. *J. Mammal.* 90, 270–305.
- Hoegh-Guldberg, O., Jacob, D., Taylor, M., Bindi, M., Brown, S., Camilloni, I., Diehliou, A., Djalante, R., Ebi, K.L., Engelbrecht, F., Guiot, J., Hijikata, Y., Mehrotra, S., Payne, A., Seneviratne, S.I., Thomas, A., Warren, R., Zhou, G., 2018. Impacts of 1.5°C Global Warming on Natural and Human Systems. In: *Global Warming of 1.5°C. An IPCC Special Report on the impacts of global warming of 1.5°C above pre-industrial levels and related global greenhouse gas emission pathways, in the context of strengthening the global response to the threat of climate change, sustainable development, and efforts to eradicate poverty* [Masson-Delmotte, V., Zhai, P., Pörtner, H.-O., Roberts, D., Skea, J., Shukla, P.R., Pirani, A., Moufouma-Okia, W., Péan, C., Pidcock, R., Connors, S., Matthews, J.B.R., Chen, Y., Zhou, X., Gomis, M.I., Lonnoy, E., Maycock, T., Tignor, M., Waterfield T.J. (In Press)].
- Hurt, G.C., Chini, L., Sahajpal, R., Froliking, S., Bodirsky, B.L., Calvin, K., Doelman, J.C., Fisk, J., Fujimori, S., Klein Goldewijk, K., 2020. Harmonization of global land use change and management for the period 850–2100 (LUH2) for CMIP6. *Geosci. Model Dev.* 13, 5425–5464.
- IPBES, 2019. In: Díaz, S., Settele, J., Brondizio, E.S., Ngo, H.T., Guèze, M., Agard, J., Arneeth, A., Balvanera, P., Brauman, K.A., Butchart, S.H.M., Chan, K.M.A., Garibaldi, L.A., Ichii, K., Liu, J., Subramanian, S.M., Midgley, G.F., Miloslavich, P., Molnár, Z., Obura, D., Pfaff, A., Polasky, S., Purvis, A., Razaque, J., Reyners, B., Roy Chowdhury, R., Shin, Y.J., Visseren-Hamakers, L.J., Willis, K.J., Zayas, C.N. (Eds.), *Summary for Policymakers of the Global Assessment Report on Biodiversity and Ecosystem Services of the Intergovernmental Science-Policy Platform on Biodiversity and Ecosystem Services*. IPBES secretariat, Bonn, Germany (56 pages).
- IPCC, 2021. Summary for policymakers. In: *Masson-Delmotte, V., Zhai, P., Pirani, A., Connors, S.L., Péan, C., Berger, S., Caud, N., Chen, Y., Goldfarb, L., Gomis, M.I., Huang, M., Leitzell, K., Lonnoy, E., Matthews, J.B.R., Maycock, T.K., Waterfield, T., Yelekçi, O., Yu, R., Zhou, B. (Eds.), *Climate change 2021: the physical science basis. Contribution of working group I to the sixth assessment report of the intergovernmental panel on climate change*. Cambridge University Press (In Press).*
- Kaky, E., Nolan, V., Alatawi, A., Gilbert, F., 2020. A comparison between ensemble and MaxEnt species distribution modelling approaches for conservation: a case study with Egyptian medicinal plants. *Ecological Informatics* 60, 101150.
- Kart Gür, M., Gür, H., 2010. *Spermophilus xanthoprimum* (Rodentia: Sciuridae). *Mamm. Species* 42, 183–194.
- Kart Gür, M., Gür, H., 2015. Age and sex differences in hibernation patterns in free-living Anatolian ground squirrels. *Mamm. Biol.* 80, 265–272.
- Kart Gür, M., Gür, H., 2017. Küçük bir memeli türünün ekofizyolojisi ve evrimsel coğrafyası: Anadolu yer sincabı. *Kebikeç. İnsan Bilimleri İçin Kaynak Araştırmaları Dergisi* 43, 189–198.
- Kart Gür, M., Refinetti, R., Gür, H., 2009. Daily rhythmicity and hibernation in the Anatolian ground squirrel under natural and laboratory conditions. *J. Comp. Physiol. B.* 179, 155–164.
- Kass, J.M., Vilela, B., Aiello-Lammens, M.E., Muscarella, R., Merow, C., Anderson, R.P., 2018. WALLACE: a flexible platform for reproducible modeling of species niches and distributions built for community expansion. *Methods Ecol. Evol.* 9, 1151–1156.
- Kryštufek, B., Vohralík, V., 2005. *Mammals of Turkey and Cyprus*. Rodentia I: Sciuridae, Dipodidae, Gliridae, Arvicolinae. Zložba Annales, Koper, Slovenia.
- Kryštufek, B., Vohralík, V., 2012. Taxonomic revision of the Palaearctic rodents (Rodentia). Sciuridae: Xerinae 1 (*Eutamias* and *Spermophilus*). *Lynx* 43, 17–111.
- Long, R.A., Martin, T.J., Barnes, B.M., 2005. Body temperature and activity patterns in free-living arctic ground squirrels. *J. Mammal.* 86, 314–322.
- Merow, C., Smith, M.J., Silander Jr., J.A., 2013. A practical guide to MaxEnt for modeling species' distributions: what it does, and why inputs and settings matter. *Ecography* 36, 1058–1069.
- Morelli, T.L., Daly, C., Dobrowski, S.Z., Dullen, D.M., Ebersole, J.L., Jackson, S.T., Lundquist, J.D., Millar, C.I., Maher, S.P., Monahan, W.B., 2016. Managing climate change refugia for climate adaptation. *PLoS One* 11, e0159909.
- Morin, X., Thuiller, W., 2009. Comparing niche-and process-based models to reduce prediction uncertainty in species range shifts under climate change. *Ecology* 90, 1301–1313.
- Muscarella, R., Galante, P.J., Soley-Guardia, M., Boria, R.A., Kass, J.M., Uriarte, M., Anderson, R.P., 2014. ENMeval: an R package for conducting spatially independent evaluations and estimating optimal model complexity for MAXENT ecological niche models. *Methods Ecol. Evol.* 5, 1198–1205.
- Myers, N., Mittermeier, R.A., Mittermeier, C.G., Da Fonseca, G.A., Kent, J., 2000. Biodiversity hotspots for conservation priorities. *Nature* 403, 853–858.
- Newbold, T., 2018. Future effects of climate and land-use change on terrestrial vertebrate community diversity under different scenarios. *Proc. R. Soc. B* 285, 20180792.
- Newbold, T., Hudson, L.N., Arnell, A.P., Contu, S., De Palma, A., Ferrier, S., Hill, S.L., Hoskins, A.J., Lysenko, I., Phillips, H.R., 2016. Has land use pushed terrestrial biodiversity beyond the planetary boundary? A global assessment. *Science* 353, 288–291.
- Osoorio-Olvera, L., Lira-Noriega, A., Soberon, J., Peterson, A.T., Falconi, M., Contreras-Díaz, R.G., Martínez-Meyer, E., Barve, V., Barve, N., 2020. NTBOX: an R package with graphical user interface for modelling and evaluating multidimensional ecological niches. *Methods Ecol. Evol.* 11, 1199–1206.
- Öztürk, M.Z., Çetinkaya, G., Aydın, S., 2017. Climate types of Turkey according to Köppen-Geiger climate classification. *J. Geogr.* 35, 17–27.
- Özudöğru, B., Ozgisi, K., Perkaş, U., Gür, H., 2020. The quaternary range dynamics of *Noccaea iberidea* (Brassicaceae), a typical representative of subalpine/alpine steppe communities of Anatolian mountains. *Biol. J. Linn. Soc.* 131, 986–1001.
- Peterson, A.T., Papeş, M., Soberón, J., 2008. Rethinking receiver operating characteristic analysis applications in ecological niche modeling. *Ecol. Model.* 213, 63–72.
- Peterson, A.T., Soberón, J., Pearson, R.G., Anderson, R.P., Martínez-Meyer, E., Nakamura, M., Araújo, M.B., 2011. *Ecological Niches and Geographic Distributions* (MPB-49). Princeton University Press.
- Phillips, S.J., Anderson, R.P., Dudík, M., Schapire, R.E., Blair, M.E., 2017. Opening the black box: an open-source release of Maxent. *Ecography* 40, 887–893.
- Pörtner, H., Scholes, R., Agard, J., Archer, E., Arneeth, A., Bai, X., Barnes, D., Burrows, M., Chan, L., Cheung, W., 2021. Scientific Outcome of the IPBES-IPCC Co-Sponsored Workshop on Biodiversity and Climate Change. IPBES secretariat, Bonn, Germany.
- Powers, R.P., Jetz, W., 2019. Global habitat loss and extinction risk of terrestrial vertebrates under future land-use-change scenarios. *Nat. Clim. Chang.* 9, 323–329.
- Riahi, K., Van Vuuren, D.P., Kriegler, E., Edmonds, J., O'Neill, B.C., Fujimori, S., Bauer, N., Calvin, K., Dellink, R., Fricko, O., 2017. The shared socioeconomic pathways and their energy, land use, and greenhouse gas emissions implications: an overview. *Glob. Environ. Chang.* 42, 153–168.
- Roubicek, A., VanDerWal, J., Beaumont, L., Pitman, A., Wilson, P., Hughes, L., 2010. Does the choice of climate baseline matter in ecological niche modelling? *Ecol. Model.* 221, 2280–2286.
- Sharpe, P.B., Van Horne, B., 1999. Relationships between the thermal environment and activity of Piute ground squirrels (*Spermophilus mollis*). *J. Therm. Biol.* 24, 265–278.
- Siddig, A.A., Ellison, A.M., Ochs, A., Villar-Leeman, C., Lau, M.K., 2016. How do ecologists select and use indicator species to monitor ecological change? Insights from 14 years of publication in ecological indicators. *Ecological Indicators* 60, 223–230.
- Sloan, S., Jenkins, C.N., Joppa, L.N., Gaveau, D.L., Laurance, W.F., 2014. Remaining natural vegetation in the global biodiversity hotspots. *Biol. Conserv.* 177, 12–24.
- Soberón, J., Peterson, A.T., 2005. Interpretation of models of fundamental ecological niches and species' distributional areas. *Biodivers. Inform.* 2, 1–10.
- Thorington Jr., R.W., Koprovski, J.L., Steele, M.A., Whatton, J.F., 2012. *Squirrels of the World*. JHU Press.
- Török, P., Neuffer, B., Heilmeyer, H., Bernhardt, K.-G., Wesche, K., 2020. Climate, landscape history and management drive Eurasian steppe biodiversity. *Flora* 271, 151685.
- Van Horne, B., 2003. Conservation of ground squirrels. In: Wolff, J.O., Sherman, P.W. (Eds.), *Rodent societies: An ecological and evolutionary perspective*. University of Chicago Press, Chicago, IL, pp. 463–471.
- Vispo, C.R., Bakken, G.S., 1993. The influence of thermal conditions on the surface activity of thirteen-lined ground squirrels. *Ecology* 74, 377–389.
- Warren, R., Price, J., Graham, E., Forstnerhaeusler, N., VanDerWal, J., 2018. The projected effect on insects, vertebrates, and plants of limiting global warming to 1.5°C rather than 2°C. *Science* 360, 791–795.
- Wesche, K., Ambarli, D., Kamp, J., Török, P., Treiber, J., Dengler, J., 2016. The Palaearctic steppe biome: a new synthesis. *Biodivers. Conserv.* 25, 2197–2231.
- Yensen, E., Sherman, P.W., 2003. Ground squirrels (*Spermophilus* and *Ammospermophilus* species). In: *Feldhamer, G.A., Thompson, B.C., Chapman, J.A. (Eds.), Wild mammals of North America: biology, management, and conservation*. Johns Hopkins University Press, Baltimore, MD, pp. 211–231.
- Yiğit, N., Ferguson, A., 2020. *Spermophilus xanthoprimum*. The IUCN Red List of Threatened Species 2020: e.T20496A22263838. <https://doi.org/10.2305/IUCN.UK.2020-2.RLTS.T20496A22263838.en> (Downloaded on 31 August 2021).